

Firwin's 'Pattern Library' – Bringing Blankets to Life

The diesel and gas engine market is quite vast, with so many makes and models in existence and new ones constantly being introduced. At Firwin, we pride ourselves not only in our ability to design and build quality removable insulation blankets that precisely fit the large array of diesel and gas engines on the market, but also in our ability to quickly respond to customer inquiries and request for quotes.

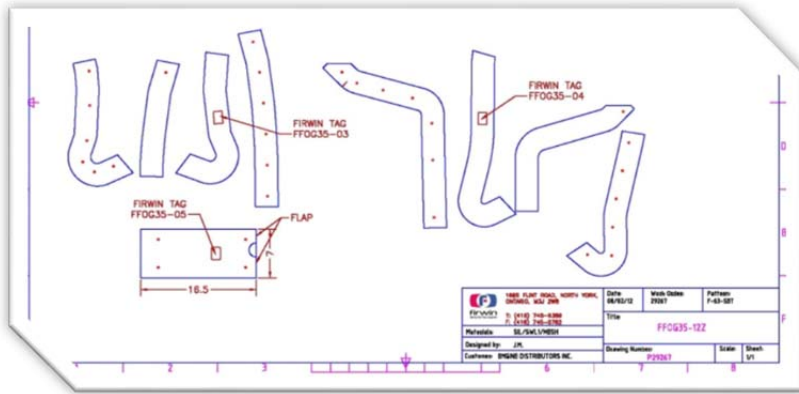
No matter what the engine make or model, we strive to provide our customers with an accurate and timely quote, typically within 24 hours. Our ability to rapidly respond to customer inquiries with pricing information, often without requiring any more information other than the engine make and model, comes from what we call our "Pattern Library".

Pattern Library and Design Patterns:

Firwin's Pattern Library consists of thousands of 'design patterns'. A design pattern is what Firwin uses to design removable insulation blankets for a specific engine make and model. The engine's dimensions and layout are measured and recorded. These dimensions can come from something as rudimentary as tape measure and photos, to CAD and 3D Models. The blankets are then designed to precisely fit the parts that need to be covered (i.e. engine manifold, turbo, etc.). The resultant blanket size and shape is laid out in a 'design pattern', which Firwin uses to cut and sew the final blanket product into shape.



3D Model, Ford WSG-1068 LPG Engine



Design Pattern & Installed Blankets: Y-Pipe, Ford WSG-1068 LPG Engine.

Firwin's 'Pattern Library' Advantage:

Being in the insulation blanket business for close to 30 years has allowed Firwin to build up a large database of 'design patterns' for diesel and gas engines and exhaust components. Our design database consists of thousands of patterns from most of the major manufactures, from the smallest engines to some of the largest diesel and gas engines on the market. The advantage to both Firwin and its customers is quick turnaround time for quotes and production, no need for customers to take measurements, and no need for prototyping for blanket fit confirmation. Of course, in spite of the breadth of Firwin's pattern library, there will be occasions where a certain engine is new to us, and these quote requests will take slightly longer to fulfill and require drawings / dimensions.

Other Parts and Components:

In addition to engines, Firwin's pattern library consists of design patterns for exhaust components such as flanges, standard 45° and 90° elbows, silencers, catalyts, and SCRs.

Putting It All Together

Firwin's pattern library gives its customers the ability to receive both accurate and timely quotations, and the assurance that the final insulation blanket product is one that has already been adjusted for a superior fit.

"Firwin is unique in that it is one of the few manufacturers of removable insulaion blankets that specializes in diesel engines and diesel powered



Firwin Engineer taking Measurements

equipment”, notes Brett Herman, Firwins VP of Sales and Customer Service. “Our company actually had its origins in the diesel parts supply business, which evolved into supplying insulation blankets for diesel and gas engines and components.

“Removable insulation blankets are our focus, and the diesel and gas engine market has been the area where Firwin has chosen to specialize”, adds Brett.

“We are constantly updating and upgrading our pattern library”, notes Jon Miles, who heads Firwin’s design team of engineers. “When new engines come onto the market, we try to source one locally in order to take measurements ourselves.



Cummins NT855 Measurements Taken



Pattern Designed, Blankets Installed

We also encourage customer feedback, and will adjust any existing patterns if we find that the fit is for some reason not as good as it could be”, said Jon. “Our goal is to create a pattern library that is constantly evolving to encompass more engine and exhaust components, and enable Firwin to provide its customers with the ultimate fit in removable insulation blankets.”

Other Articles: [SCR Challenges](#) · [Power Gen 2012 in Orlando](#)